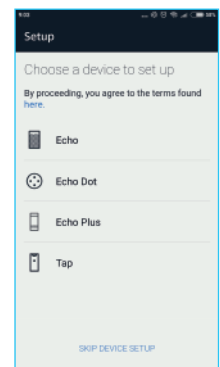
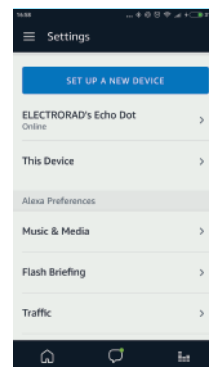
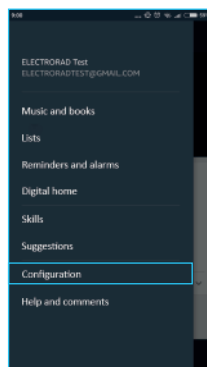
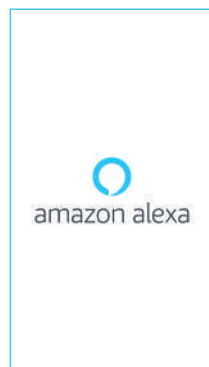
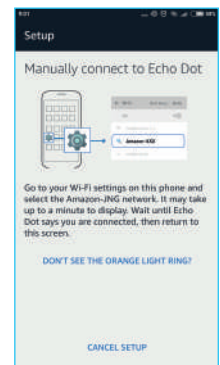
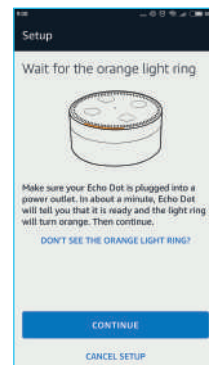
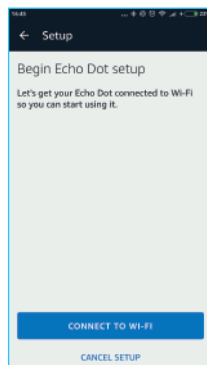
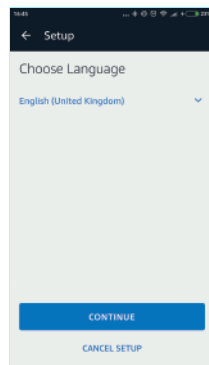


How to configure Amazon Alexa



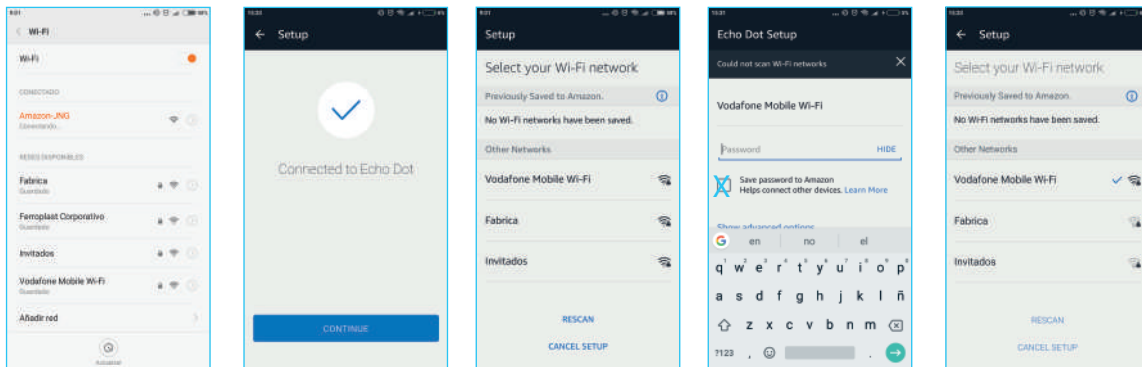
No modification is required in our radiators or in the Electrorad APP, but we need a good internet connection.

1. Download and install the Amazon Alexa application from the smartphone market.
2. Once installed, click in the 3 horizontal bars that appear in the upper left corner and choose "Configuration".
3. Click in "Set up a new device".
4. We choose our device.



5. We select the language and give it to continue.
6. We give to "Connect to WiFi".
7. Then, as shown in the image, we must hold the button with a pressed point for + or- 5 seconds (until Alexa emits an orange light) and we give it to continue.
8. We have to leave the application, to access the WiFi settings of our Smartphone and connect to the WiFi that has generated Alexa.

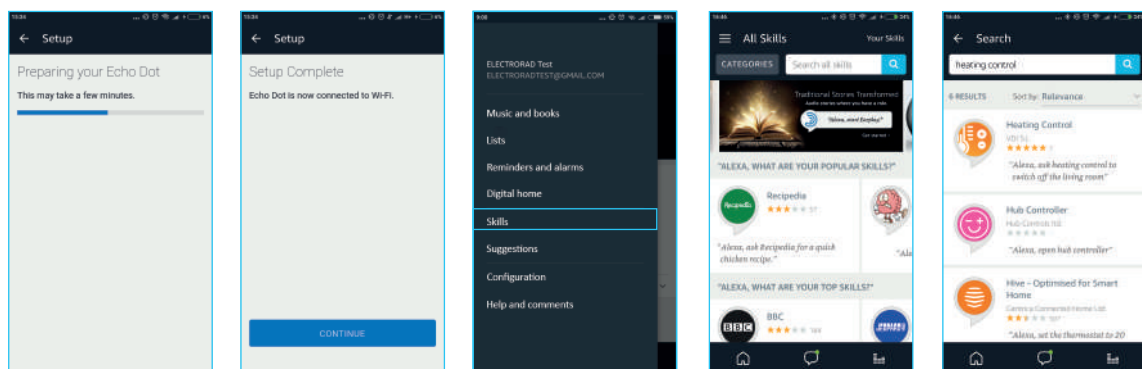
How to configure Amazon Alexa



9. We return to the application and in a few moments we will be indicated on the screen that we are connected with our device. Click on Continue.

10. We will have to choose the WiFi network that we want to link with Alexa.

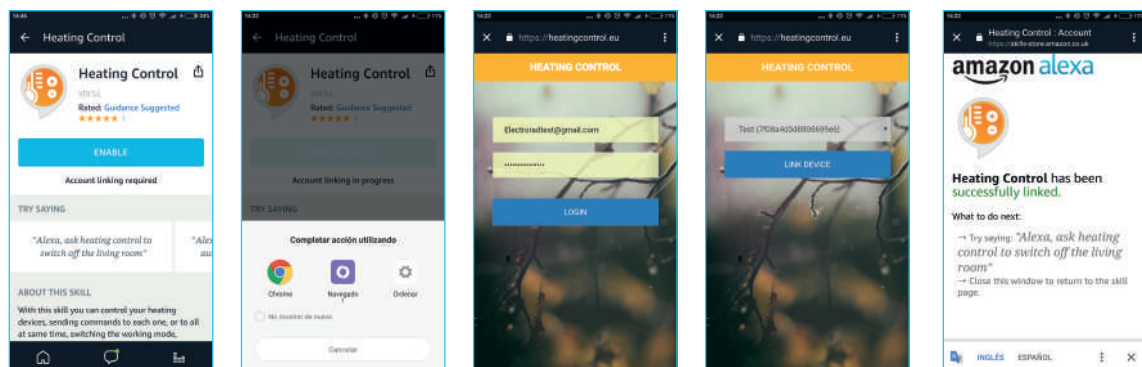
11. Will send us to put the password of the WiFi network (we can select the box to stay saved, so in the future, if we want to connect again to that WiFi, and will appear marked and we will not have to re-enter the password of the network).



12. It will automatically jump this screen and we'll have to wait until we get that our digital assistant is connected to the WiFi network.

13. Once Alexa is connected, we click again on the 3 horizontal stripes that are in the upper left corner, and this time click on "Skills".

14. To control our WiFi transmitter with our digital assistant, we need to download the skill "Heating control".

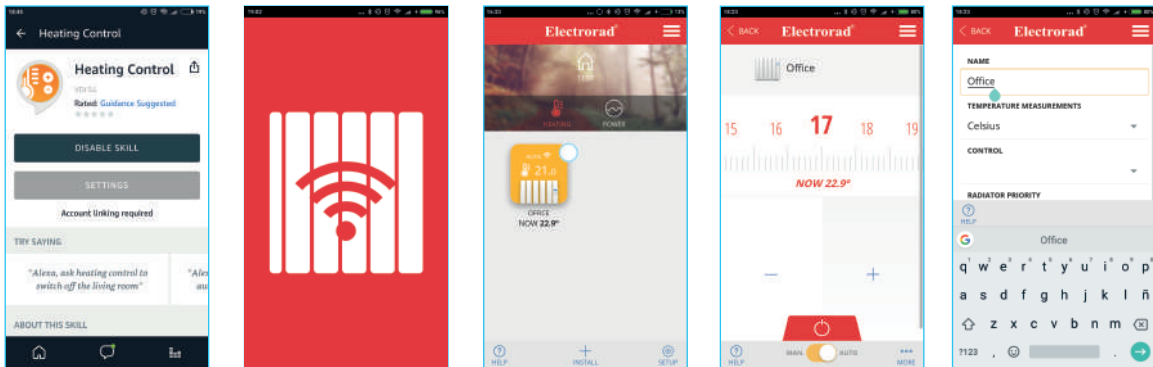


15. Once selected press "Enable".

16. We redirected to the browser, where we put our user and password (if not have to create it) and we will have to enter the code of our multilink.

17. We would have Alexa ready to receive orders.

How to configure Amazon Alexa



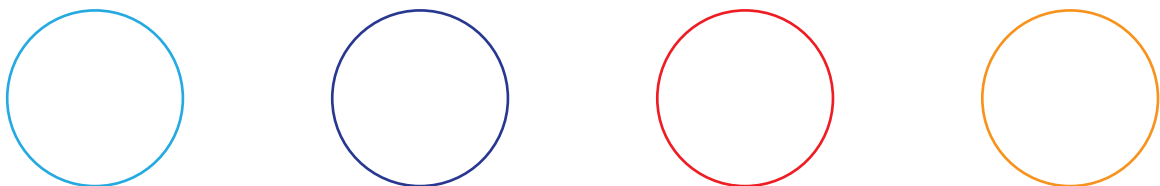
In case of error disable the skill and re-enable repeating the previous process.

18. We must remember that Alexa works with a command structure; START + COMMAND + DEVICE/S (for example; Alexa, ask heating control to switch off the office).

19. For proper operation, we must name in the APP "Electrorad" Our emitters (for this click on transmitter and "more" we choose "Setup" and there we can name it).



Meaning of the Lights



Clearly blue; When we go up or down the volume.

Dark blue (combined with clearly blue); Alexa is listening to you.

Red; When you have no connection or when you disable the microphone.

Orange (moving); When you configure it to connect to the WiFi network.